



# Kerbstones



RANGE	
VWP Kerbs	8
Half Batter (HB)	10
Splay (SL)	11
Bull Nose (BN)	12
Square (SQ)	12
<b>Accessory Kerbs</b>	14
Transition Kerbs	15
Dropper Kerbs	16
Radius Kerbs	17
Quadrant Kerbs	19
Angle Kerbs	19
Offlet Kerbs	20
Dished Channel	22
Sloped Channel	22
L Drain Channel	23
Gully Kerbs	24
L Profiled Kerbs	24
Drain Covers	25
Bollards	26
<b>Application Example</b>	27
<b>Other Products by VYARA</b>	29

# KERBSTONES

## Kerbs: The Quiet Architects of Streets

Kerbs define the street at its most fundamental level. They shape movement, protect pedestrians, and give character to shared urban spaces—bringing clarity, discipline, and seamless transitions between carriageways, footpaths, and public realms.

## VYARA Kerbs

Designed for proportion, performance, and finish—not ornament—VYARA kerbs enable clean lines and coherent detailing on site.

As pioneers in raising expectations of urban street design in India, VYARA offers one of the most comprehensive kerb and accessory ranges—comparable with leading international catalogues.

Manufactured using advanced **Vacuum Wet Press** technology, VYARA kerbs deliver assured quality, refined finishes, and durability that lasts. Backed by robust manufacturing capacity and dependable coordination, we support large projects and tight time lines—ensuring streets are completed on schedule, without compromise.

Kerbs can be made to conform to **EN 1340:2003** and **IS 5758:2023**, making them ideal for the most demanding applications.

## Applications

Highways & Roads | Pedestrian Areas | Domestic, Commercial & Industrial Driveways

**Right Details. Fewer Gaps. Built to Last.**





HB Kerbs and Dished Channels used by Surat Municipal Corporation



HB Kerbs, Industrial Park



HB Kerbs, Residential project



Dropper and Radius Kerbs, Municipal streets



'State of the Art', three station Kerb Press from UK

# VACUUM WET PRESS KERBS

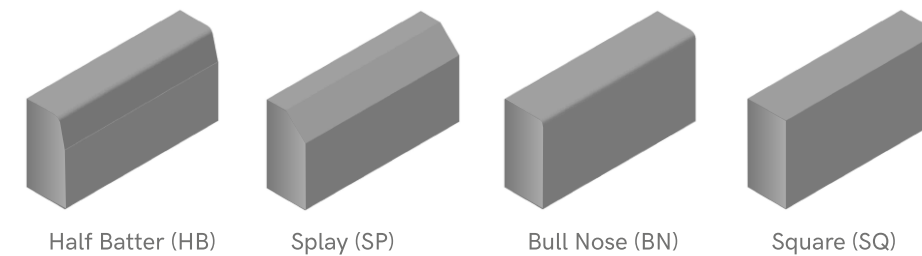
**Precision. Strength. Durability.**

VYARA road kerbs and accessories are manufactured using a **Vacuum Wet Press** process—combining high hydraulic pressure with simultaneous vacuuming. This produces dense, precise units with a refined and consistent finish across both standard kerbs and accessories.

Characteristics of VWP Kerbs	Benefits
Very high strength	Long service life and lasting value
Large sizes	Fewer joints, cleaner look
Extremely good finish	Refined, premium aesthetics
High abrasion resistance	Reduced repair and replacement
Low water absorption	Less blackening, easier maintenance
Comprehensive range	Details resolved with matching accessories

There are four basic profiles to the most common road kerbs used:

- **Half Batter (HB)**: Most frequently used shape, for deflection of traffic and safety of pedestrians
- **Splay (SP)**: To allow traffic to climb over the footway
- **Bull Nose (BN)**: To provide access to vehicles from carriageways to an access point across the carriageway
- **Square (SQ)**: Used as flush kerbs, to provide restraints at FFL



Half Batter (HB)

Splay (SP)

Bull Nose (BN)

Square (SQ)

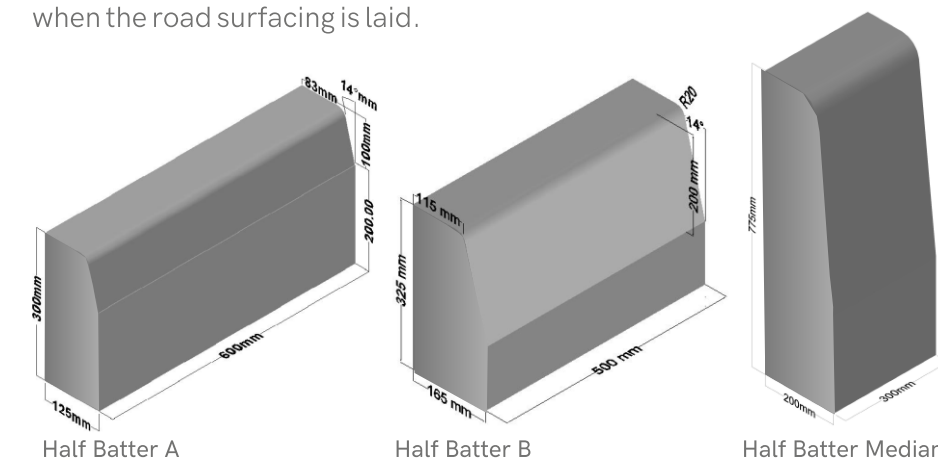




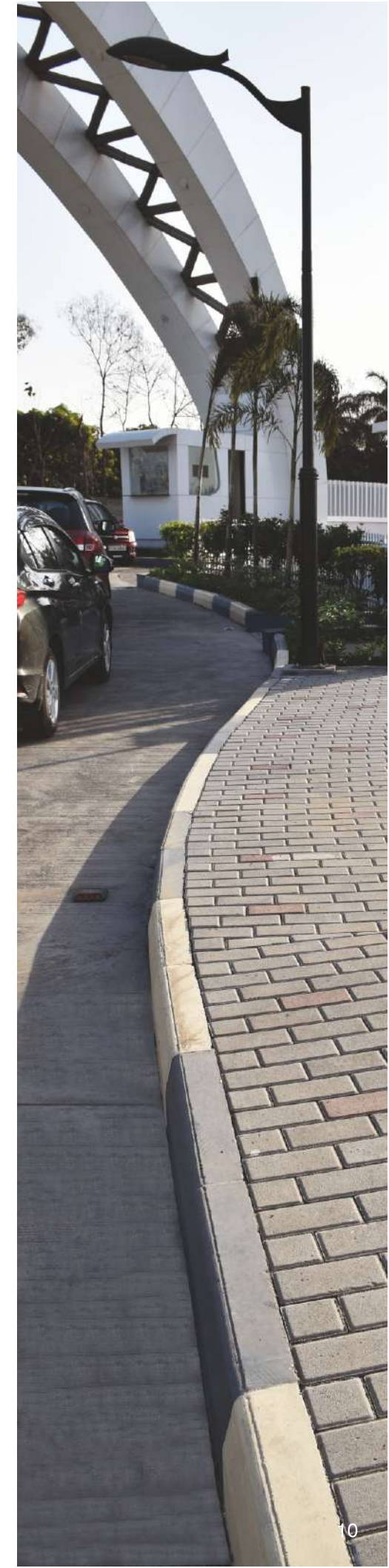
## Half Batter (HB)

Half Batter is the most elegant and commonly used profile of kerbs. This is the profile of choice when a footpath is provided adjacent to the carriageway— it helps deflect the traffic back on to the carriage way and protects pedestrians.

The 'sloping back' profile also enables road rollers to operate right up to the edge of the pavement without scratching or damaging the kerb face when the road surfacing is laid.

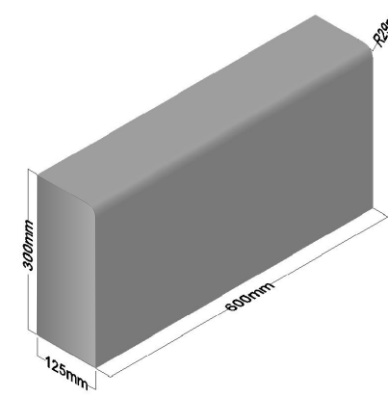


Profile	Length (mm)	Height (mm)	Thickness (mm)
HB A	1000	300	150/125/100
	600	450/375	150/125/100
	600	300	150/125/100/80/65
	600	215/175	150/125
	300	600	150/125
HB B	500	325	165/150/125
HB Median	300	775	200/150



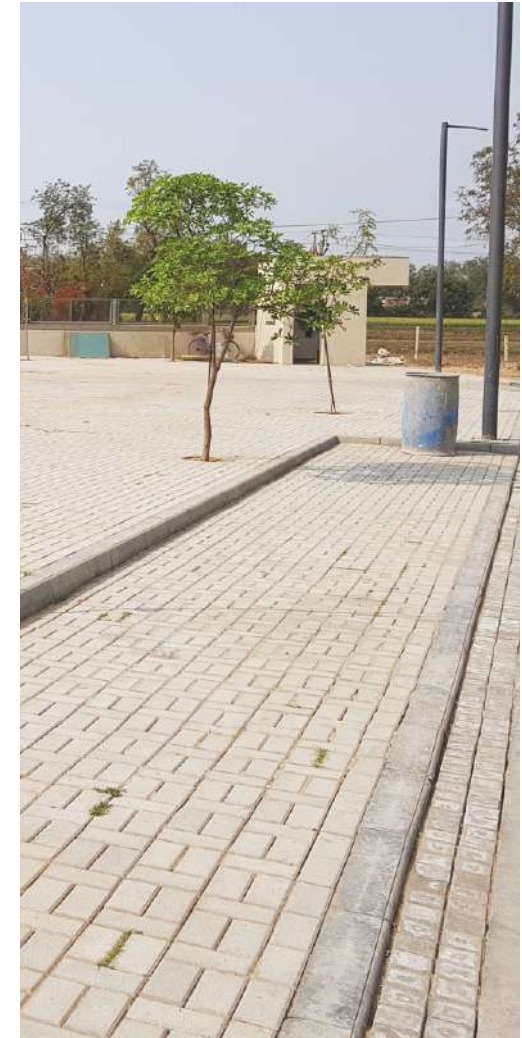


## Bull Nose (BN)



Bull Nose profile kerbs provide access to vehicles from carriageways to a private driveway or an access point across pedestrian footpath crossing. These allow for vehicles and wheel chairs to cross over very easily.

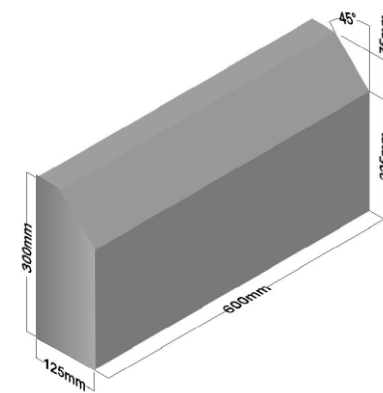
Profile	Length (mm)	Height (mm)	Thickness (mm)
BN	600	450/375	150/125/100
	600	300	150/125/100/80/65
	600	215/175	150/125
	300	600	150/125



## Splay (SP)

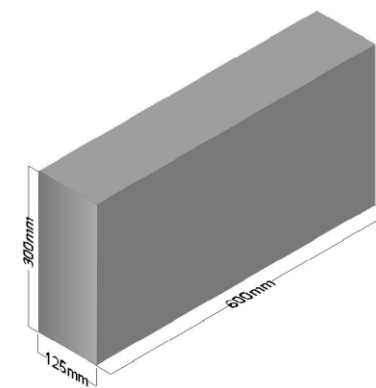
The purpose of the Splay profile kerbs is to allow access to vehicular traffic over them. These are typically used to give access to demarcated parking spaces, or where vehicles may need to climb on to verges in case of emergencies.

For safety reasons, these are not used when a footpath is present.



Profile	Length (mm)	Height (mm)	Thickness (mm)
SP	600	450/375/300	150/125

## Square (SQ)



The Square profile is typically used as flush kerbing, embedded completely in the ground, with only the top surface visible. These kerbs help provide restraints for both the footpath as well as the carriage way, and are useful in very low traffic areas, where the sidewalk is intended as a mixed use space to occasionally allow parking of vehicles.

Profile	Length (mm)	Height (mm)	Thickness (mm)
SQ	600	450/375	150/125/100
	600	300	150/125/100/80/65
	600	215	150/125

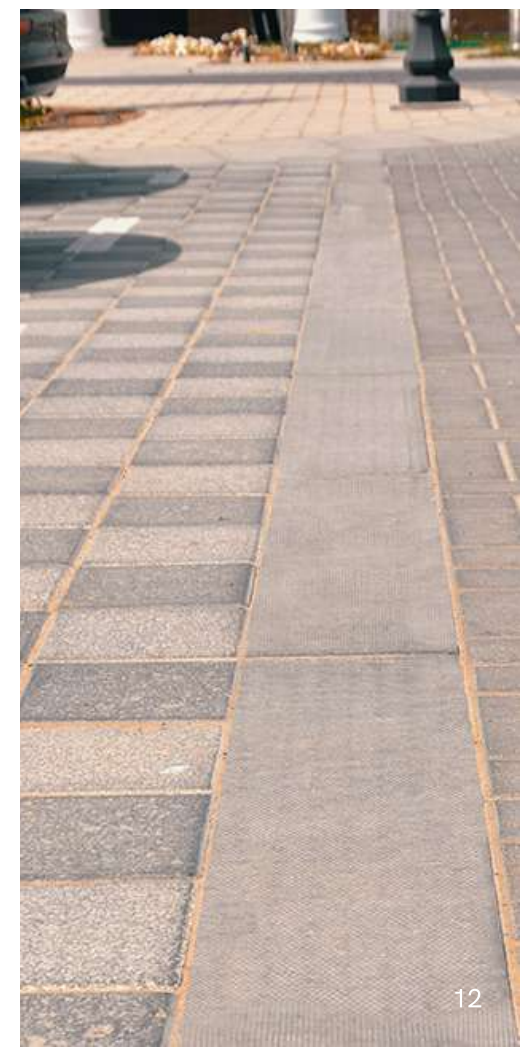




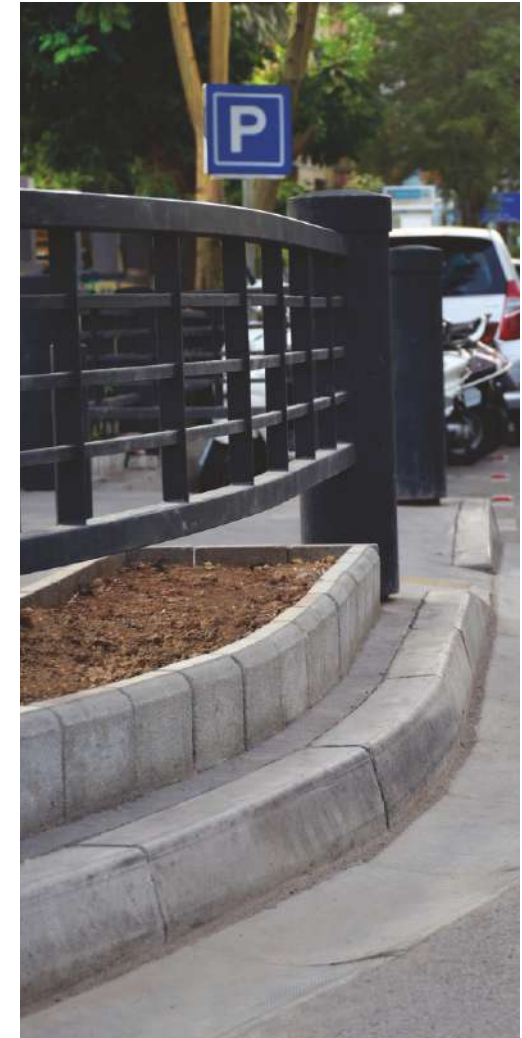
Photo courtesy: M/s. Prabhakar B. Bhagwat

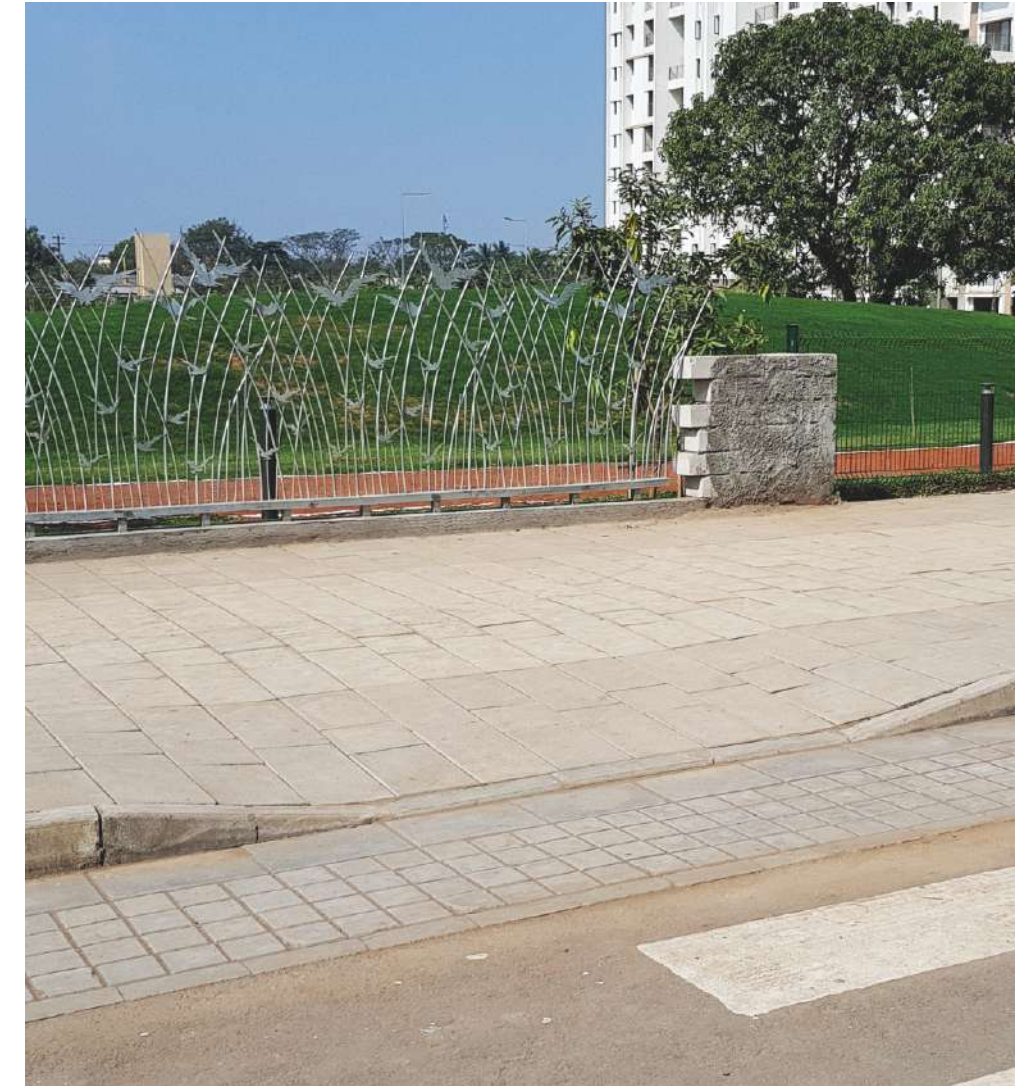
## ACCESSORY KERBS

Accessory kerbs handle transitions from one type of kerb to another, drops in footways, and provide for radiuses and turnings in roads. These are all necessary to obtain detailed design solutions.

- Transition Kerbs
- Dropper Kerbs
- Radius Kerbs
- Quadrant Kerbs
- Angle Kerbs
- Offlet Kerbs
- Dished Channel
- Sloped Channel
- L Drain Channel
- Gully Kerbs
- L Profiled Kerbs (HB and BN)
- Drain Covers
- Bollards

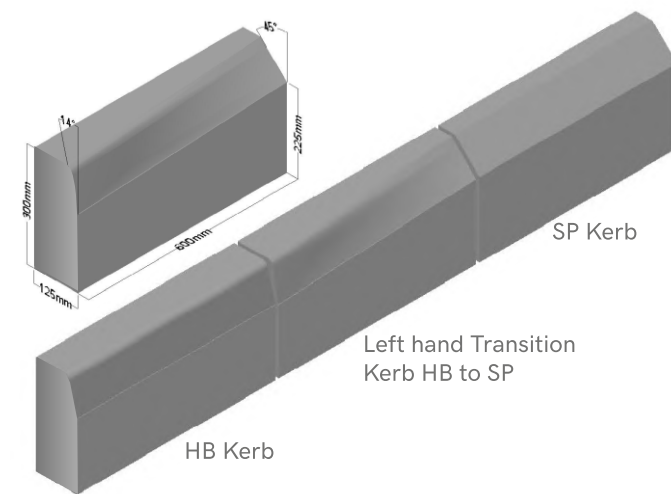
These when used together, offer a fairly complete solution to the kerbing needs, whether in the neighborhood, streets or in highways.





## Transition Kerbs

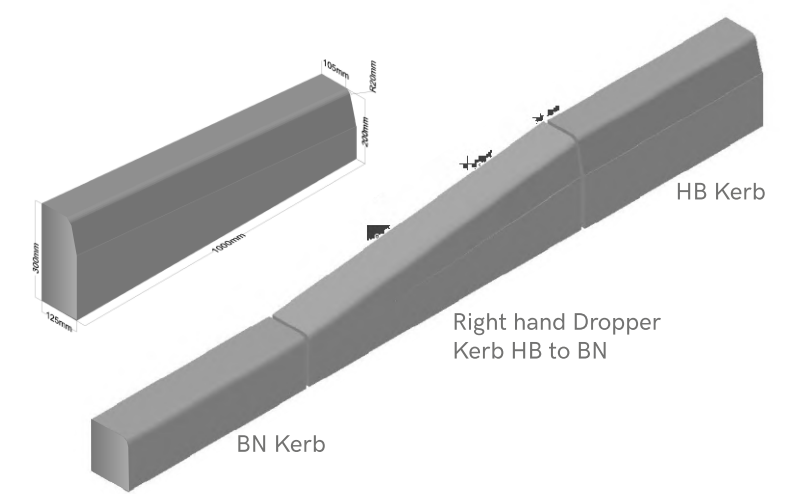
The straight Transition Kerb helps transition from Half Batter to Splay profiles and vice versa. Though a very small quantity of these kerbs are used, they form an important detailing element, and add to the site.



Profile	Length (mm)	Height (mm)	Thickness (mm)
HB to SP (LH/RH)	600	300	150/125

## Dropper Kerbs

Dropper Kerbs provide a smooth height transition between Half Batter and Bull Nose Kerbs, enabling accessible pedestrian crossings with a clean, seamless finish. Available from Vyara in a 1:10 gradient.



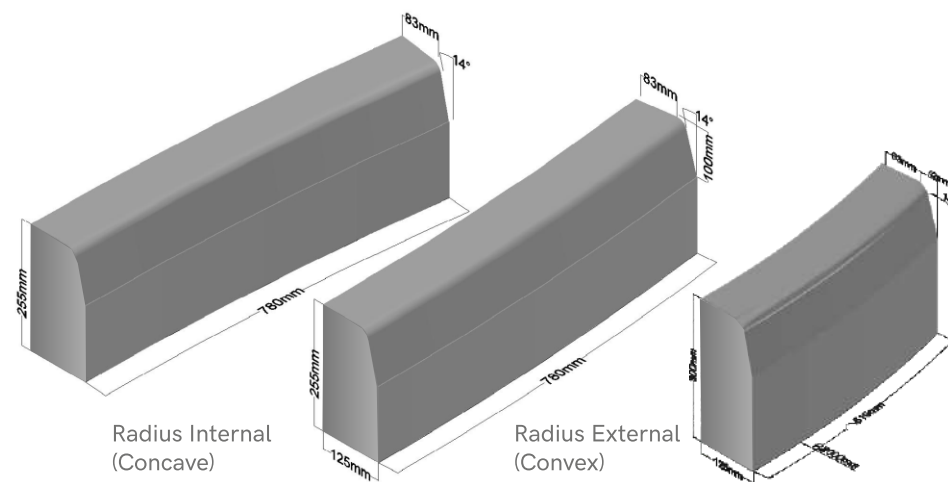
Profile	Length (mm)	Height (mm)	Thickness (mm)
HB to BN (LH/RH)	1000	300-200	150/125



Photo courtesy: M/s. Prabhakar B. Bhagwat

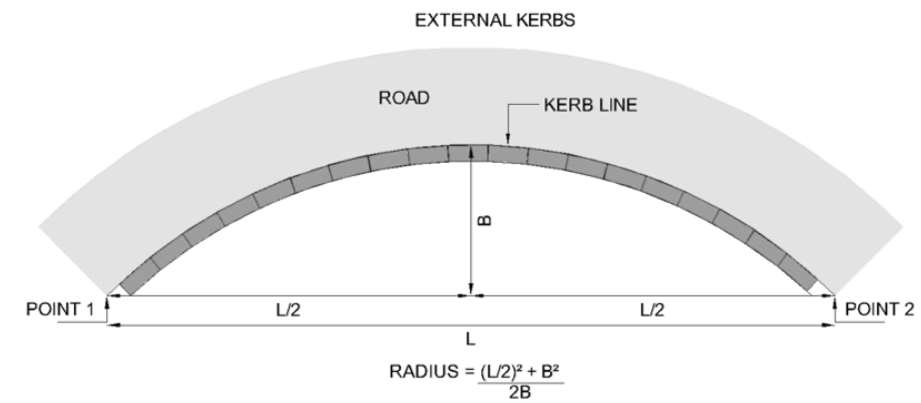
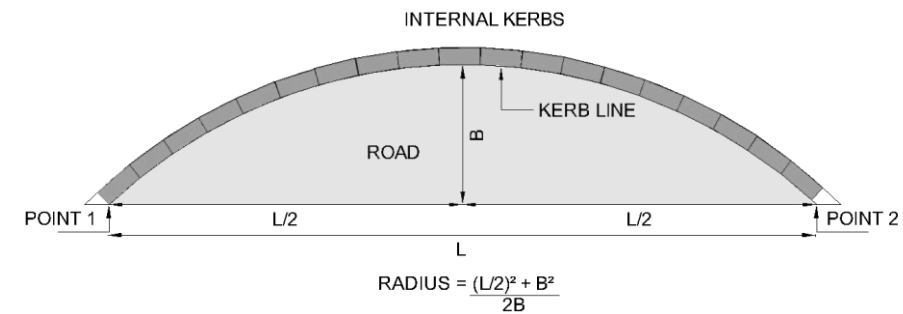
## Radius Kerbs

Radius Kerbs are available in various radii in concave and convex shapes with a half batter profile and a similar pimple finish to match the other road kerbs.



Profile	Length (mm)	Height (mm)	Thickness (mm)	Radius (mtr.)
HB Ext	388	300	150/125	1
	519	300	150/125	2
	780	300	150/125	3/4.5/6/9/10/12
HB Int	780	300	150	6/9
HB Ext <sup>WC</sup>	780	255	125	8/10/12
HB Int <sup>WC</sup>	780	255	125	3/6/10

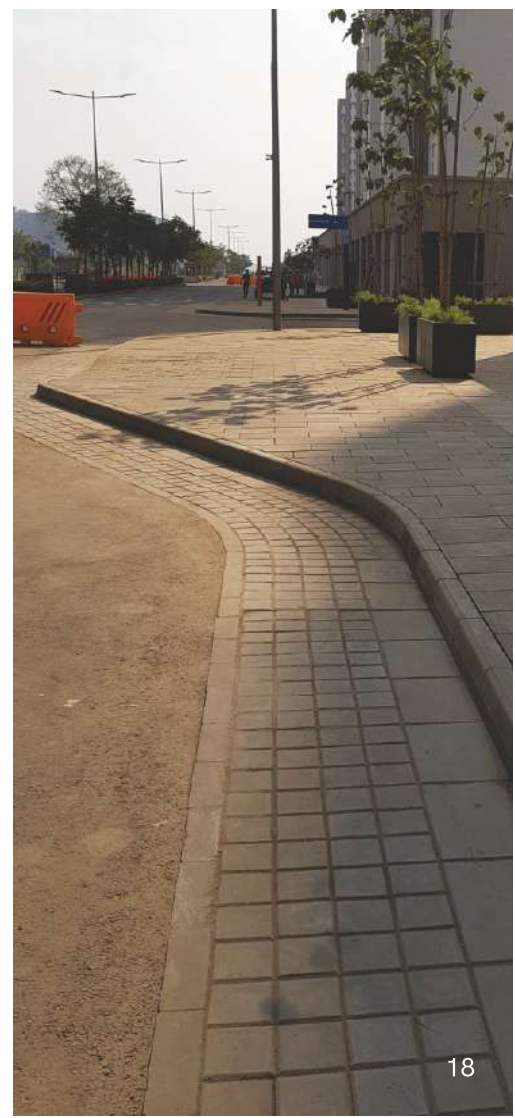
The radius is specified in metres and it represents what the radius would be if a complete circle was made with the kerbs..



To calculate the radius of the bend and hence what kerbs we need, the formula used is

$$\text{Radius} = \frac{(L/2)^2 + B^2}{2B}$$

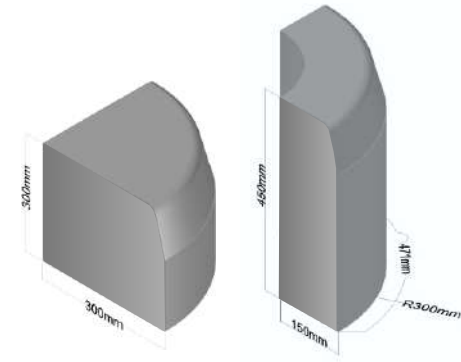
where points 1 and 2 are where the bend starts and stops. Points 1 and 2 are always taken from the face of the kerbs to match the other road kerbs.



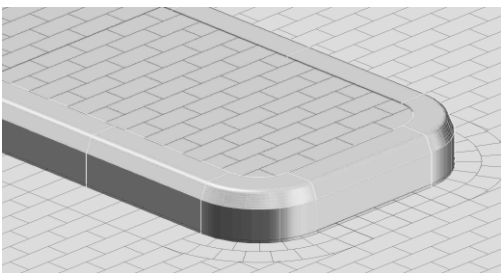


## Quadrant Kerbs

Quadrant Kerbs are used when a neat finish on a curved edging is needed. They can be used stand-alone or in combination with straight kerbs.

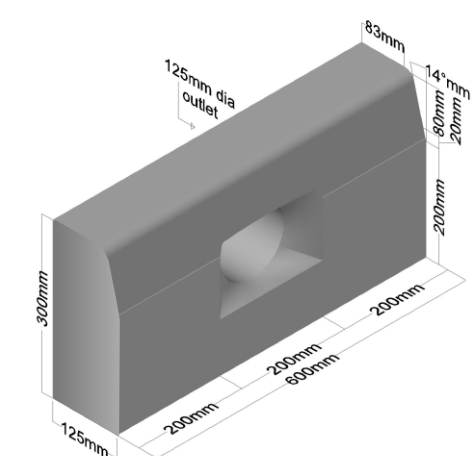


Profile	Length (mm)	Height (mm)	Thickness (mm)
HB <sup>WC</sup>	471	450	150/125
	300	300	-



## Offlet Kerbs

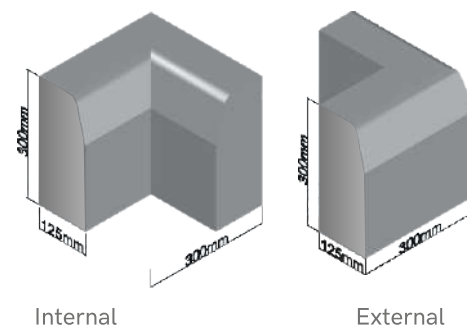
Offlet Kerbs allow standing water to drain away from carriageways to other landscape features. We offer a standard offlet kerb and some core cut options of 100 mm or 125 mm diameter for customized locations of apertures.



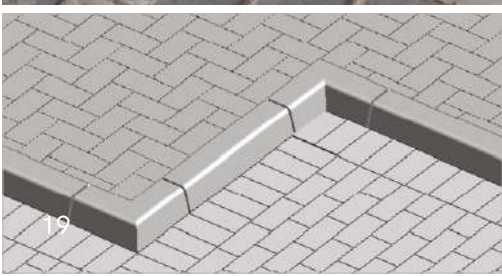
Profile	Length (mm)	Height (mm)	Thickness (mm)
HB	600	300	150/125/100

## Angle Kerbs

Angle Kerbs help provide kerbing treatment details for several road features such as dividers, pedestrian safety bays, parking spaces and the like.



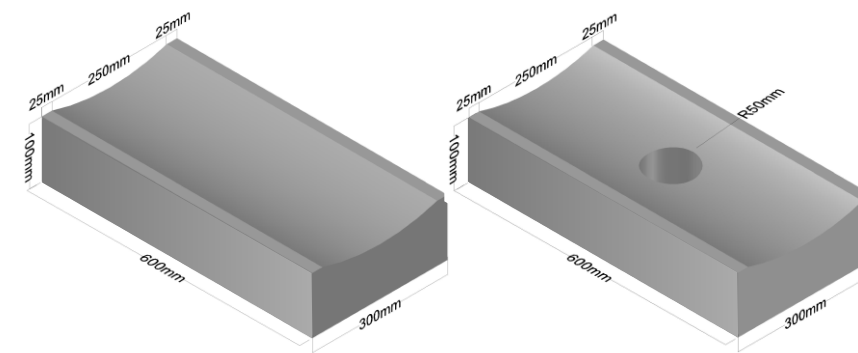
Profile	Length (mm)	Height (mm)	Thickness (mm)
HB (Int/Ext) <sup>WC</sup>	300	450/300	150/125
HB (Int/Ext)	300	250	150/125





## Dished Channel

Dished Channels are normally used adjacent to kerbs towards the carriageway. These aid in smooth drainage of water. Sometimes, they are also used to drain water in other landscape features. Owing to their very regular surface, they can carry decent volumes of water.

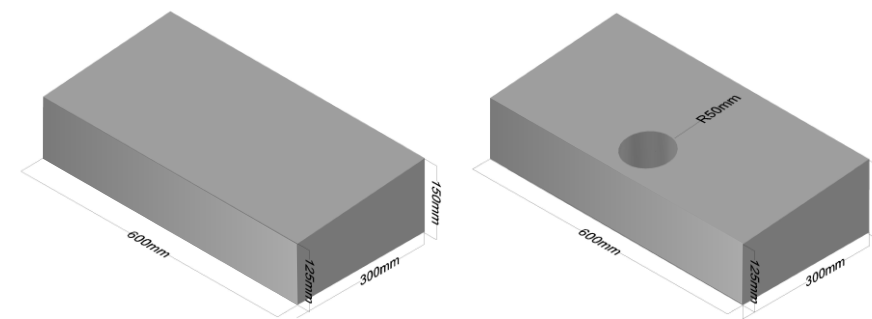


Profile	Length (mm)	Width (mm)	Thickness (mm)
Dished Channel	600/500	300	125/100

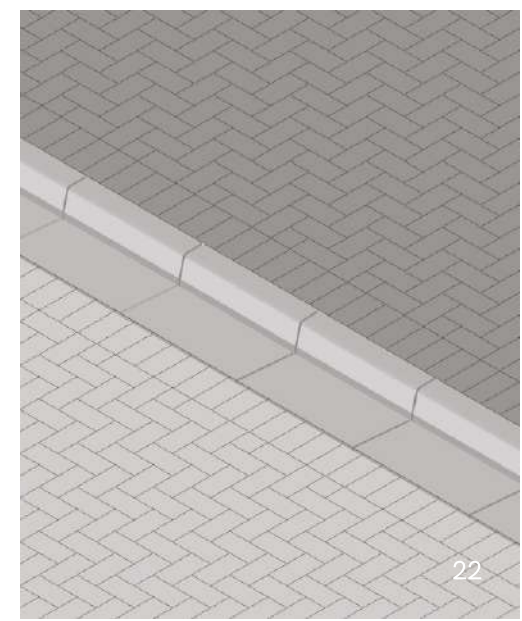


## Sloped Channel

Sloped channel units are used when channels are required to drain away the water, but a dished profile is not desired—for instance when there is a drive over application for wheelchairs. Turned around, they can also be used as roll-over kerbs.



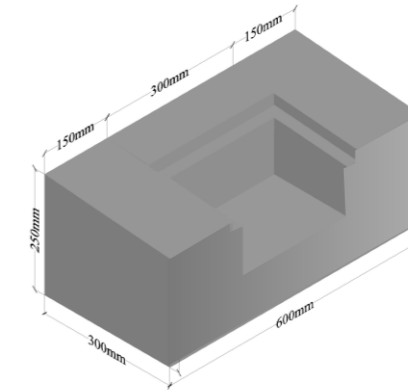
Profile	Length (mm)	Width (mm)	Thickness (mm)
Sloped Channel	600	300	150-125





## Gully Kerbs

The Gully Kerb offers a possibility to gather water along the carriage-way edge, and to drain it away by using pipes across the corresponding offset kerbs. The slope on the face of the gully matches with that of the sloped channel, and can be used almost seamlessly on the pavement edge.

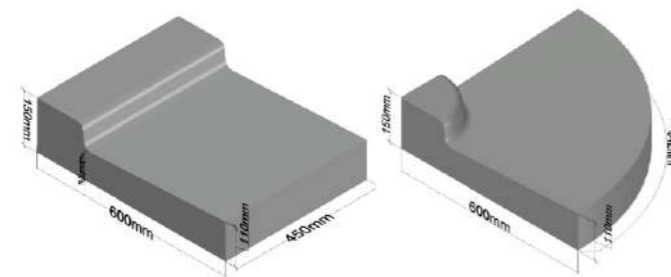


Profile	Length (mm)	Width (mm)	Thickness (mm)
Gully Kerb <sup>WC</sup>	600	300	250-225



## L Drain Channel

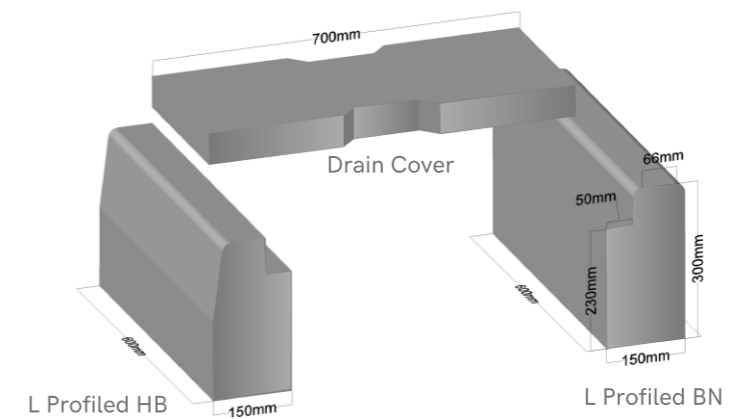
L Drain channel kerbs combine edge protection and drainage in a single, integrated detail. They safeguard pedestrians while channelling surface water along the street edge—resulting in drier streets and safer, well-defined footpaths.



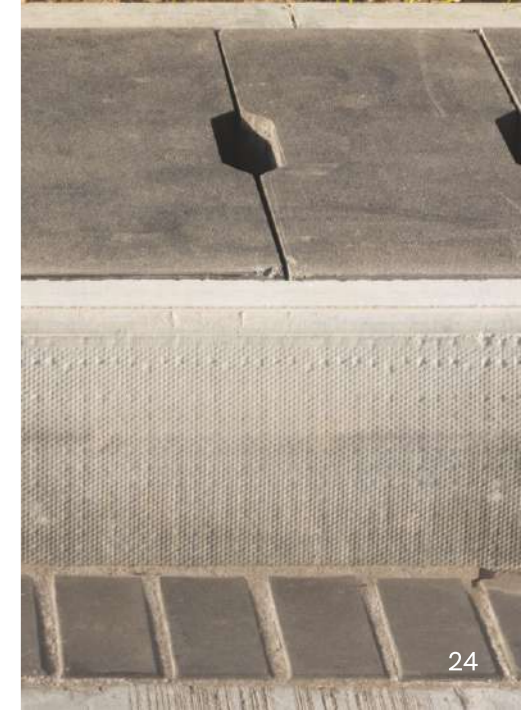
Profile	Length (mm)	Width (mm)	Thickness (mm)
L Drain	450	600	150-110
	300	450	150-110
L Drain QD <sup>WC</sup>	600	-	150-110

## L Profiled Kerbs

L Profiled kerbs help form a trench that enables the placement of precast drain covers on top, to form a covered drainage system.



Profile	Length (mm)	Height (mm)	Thickness (mm)
BN /HB	600	300	150/125



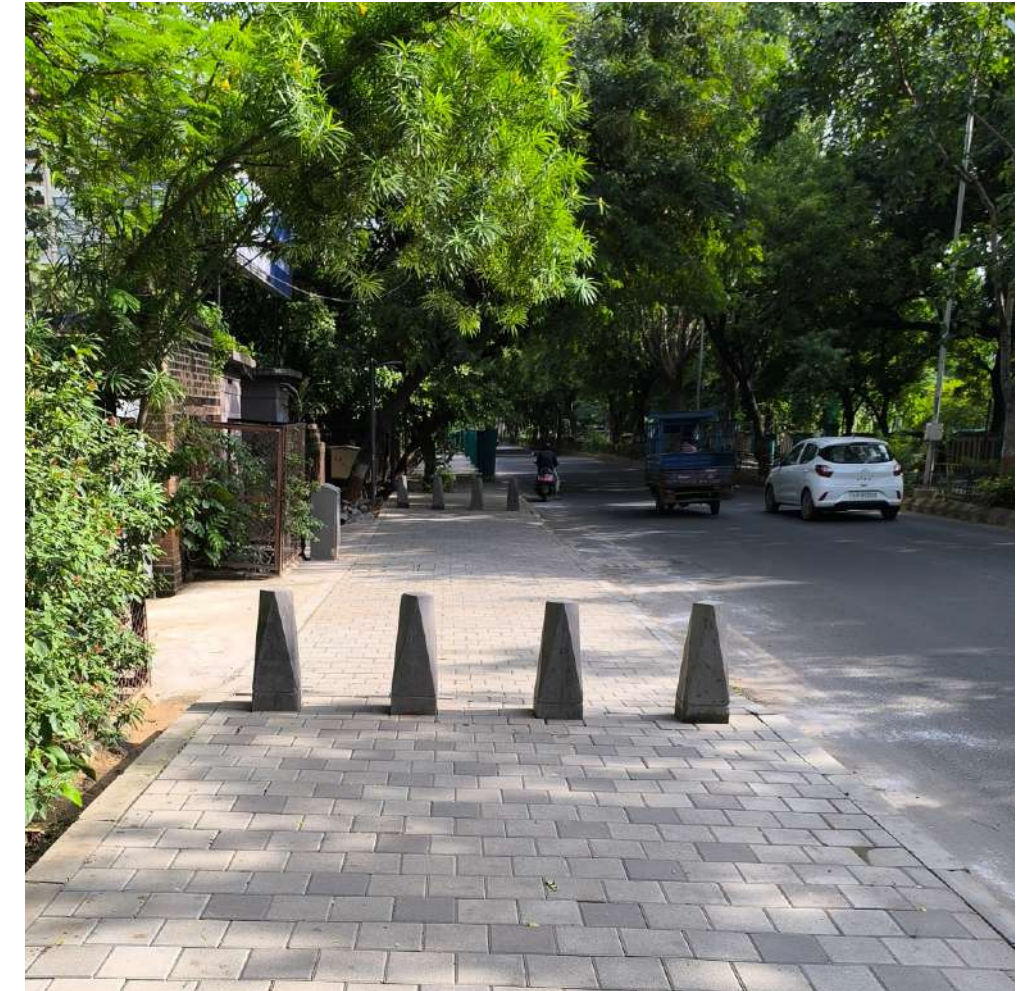


## Drain Covers

Drain Covers are available in reinforced and non-reinforced versions, with the **reinforced version** recommended for most applications. Reinforcement can be customized to suit application or customer requirements.

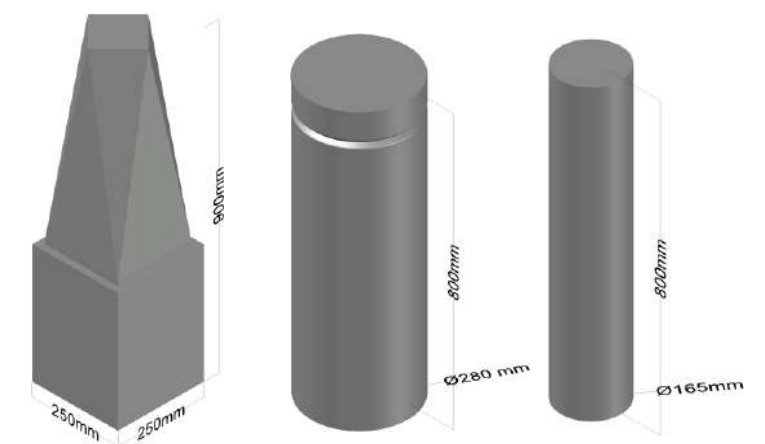


Profile	Length (mm)	Width (mm)	Thickness (mm)
Drain Cover A <sup>WC</sup>	900	600	100
Drain Cover B <sup>R</sup>	700	300	100
Drain Cover B <sup>WC</sup>	700	300	60
Drain Cover C <sup>R</sup>	940	300	100

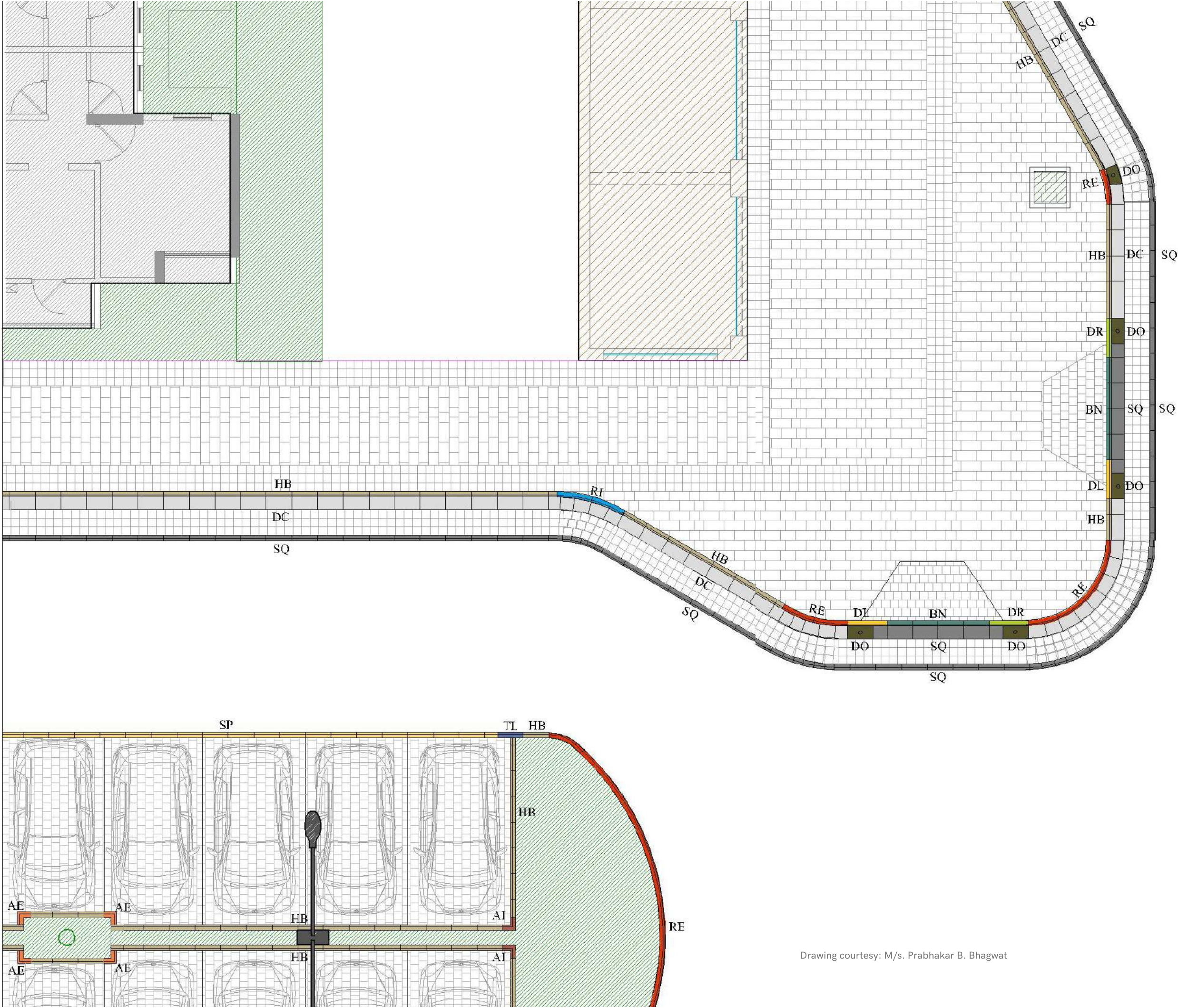


## Bollards

Precision-made concrete bollards that balance safety and form. Wet-cast for a refined finish, VYARA bollards protect, guide, and endure—without visual noise.



Profile	Length (mm)	Dia (mm)	Height (mm)
Square <sup>WC</sup>	250	-	900
Round A <sup>WC</sup>	-	280	800
Round B <sup>WC</sup>	-	165	800



### Application Example

	Half Batter	HB
	Splay	SP
	Bull Nose	BN
	Square	SQ
	Transition Kerb (Left Hand)	TL
	Dropper Kerb (Left Hand)	DL
	Dropper Kerb (Right Hand)	DR
	Radius Kerbs (External)	RE
	Radius Kerbs (Internal)	RI
	Angle Kerbs (External)	AE
	Angle Kerbs (Internal)	AI
	Dished Channel	DC
	Dished Channel with outlet	DO

Drawing courtesy: M/s. Prabhakar B. Bhagwat

## OTHER PRODUCT RANGE BY VYARA

Please refer to our other brochures for these ranges of products

### Paving Blocks

VYARA offers arguably the finest range of pavers, flags, kerbstones, drain covers, and the like, for all external road and pavement needs —whether it is to complement a finely landscaped project or to handle the brutal loads of a container yard.



### Passagio

A range of exclusive tiles for exteriors, characterised by innovative design, texture and colour options with high strength and consistency in quality.



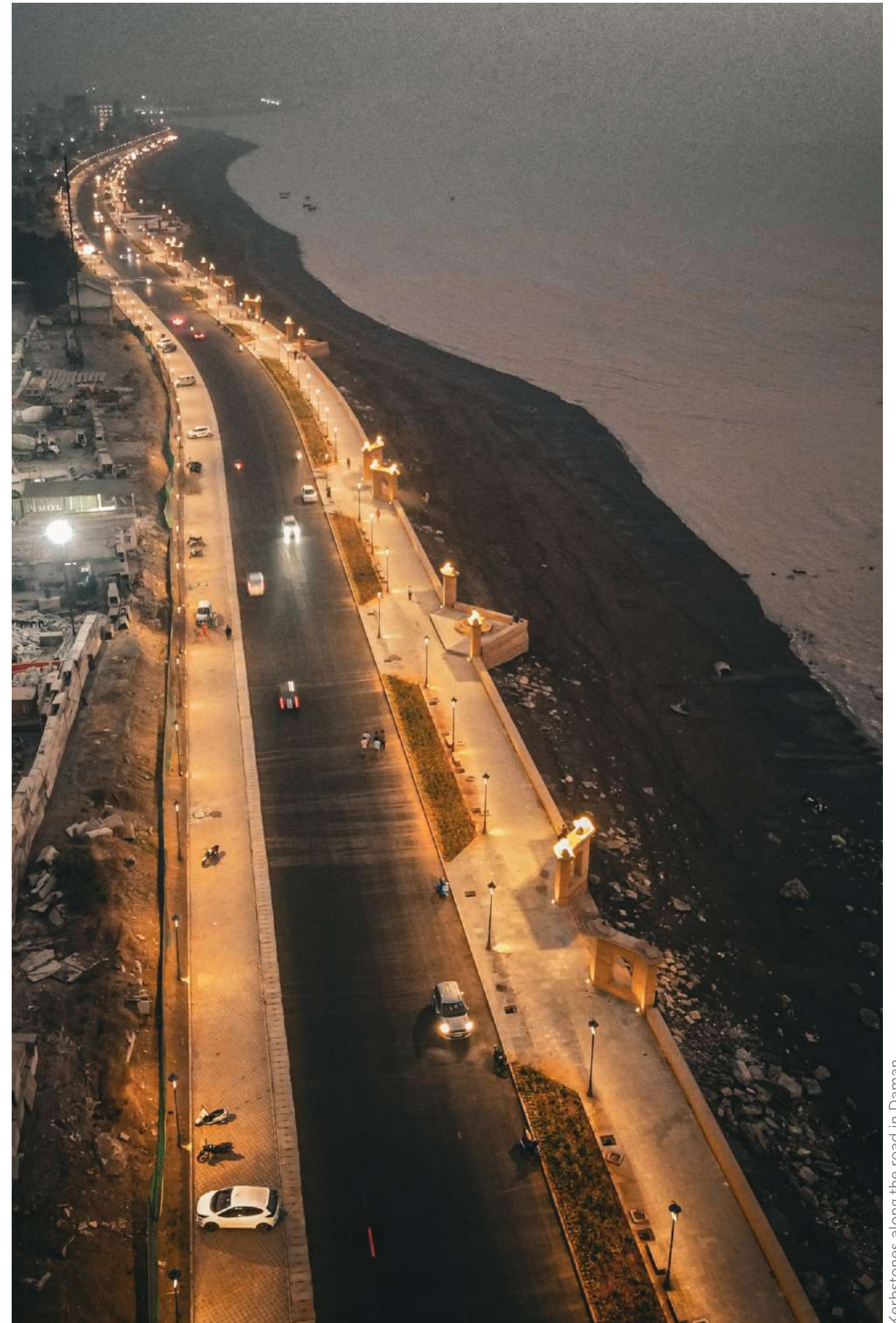
### Terrazzo Tiles

A bespoke range of concrete terrazzo tiles crafted with exceptional care and craft, using innovative blend of colours, aggregates, patterns, and textures.



### FreeForm

Explore an exquisite range of fine Architectural Premixes from FREEFORM by VYARA for cast on site finishing surfaces of Floors and Walls.



Kerbstones along the road in Daman

[www.vyaratiles.in](http://www.vyaratiles.in)



**Surat Office (HO): Vyara Tiles Limited**  
903-904 Rajhans Montessa, Nr. Le Meridian  
Dumas Road, Surat 395007, Gujarat  
0261-2472444, 9327447469 | [info@vyaratiles.in](mailto:info@vyaratiles.in)

**Ahmedabad Office: Vyara Tiles Limited**  
1317-1318, Block B, Navratna Corporate Office  
Ambli Bopal Road, Ahmedabad 380058, Gujarat  
9374034284, 6357322771 | [ahmedabad@vyaratiles.in](mailto:ahmedabad@vyaratiles.in)

**Bharuch Office: Vyara Tiles Limited**  
FF2 RK Avenue, Zadeshwar Crossing to Shukltirth Road  
Bharuch 392011, Gujarat  
9375568855 | [bharuch@vyaratiles.in](mailto:bharuch@vyaratiles.in)

**Mumbai Office: Vyara Tiles Limited**  
61, Discovery Complex, Dattapadda Road  
Borivali (E), Mumbai 400066, Maharashtra  
022-28544404, 9322285672 | [mumbai@vyaratiles.in](mailto:mumbai@vyaratiles.in)

**Vadodara Office: Vyara Tiles Limited**  
15, Silver Coin Complex, Nr. Shrenik Park Char Rasta  
Akota, Vadodara 390020, Gujarat  
9376979755 | [vadodara@vyaratiles.in](mailto:vadodara@vyaratiles.in)

**Vapi Office: Vyara Tiles Limited**  
105, Anmol Complex, NH 48, Nr. GEB Office,  
Balitha, Vapi 396191, Gujarat  
9377575856 | [vapi@vyaratiles.in](mailto:vapi@vyaratiles.in)

Pavers | Flagstones | Cobbles | Kerbstones | Tiles

