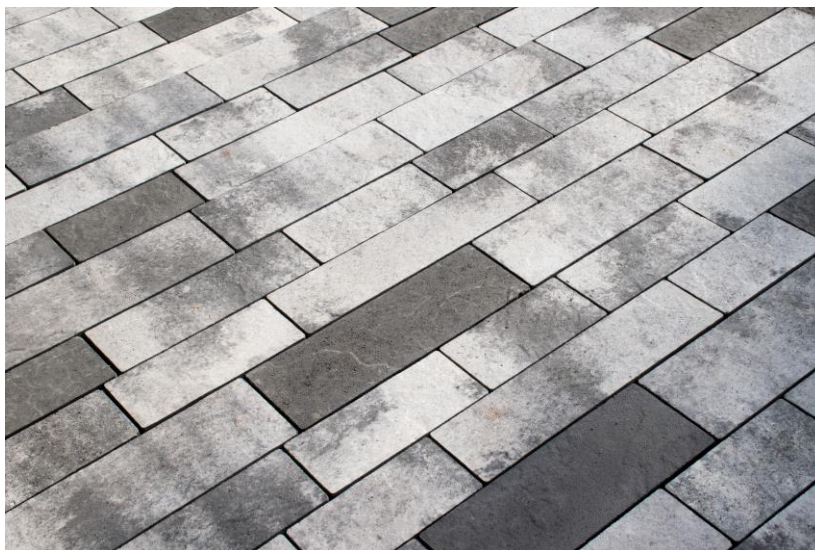
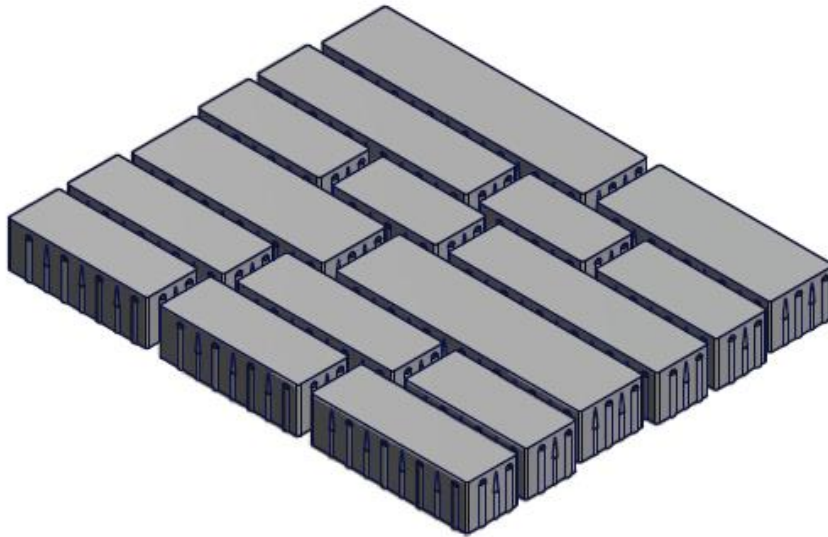


**Specifications for Modular Paving Planks – ESCALON in 100mm thickness  
with Premier Shield protection (Integral and Top Coat Treatment)**

Supply of Concrete modular paving planks “Escalon” Design”, of VYARA make in 100mm thickness,

- with nine different sizes of paving stones to be arranged in runner-bond pattern.
- with undulated surface, colours specified by the Architects
- using UV resistant colour pigments from Lanxess or equivalent
- wear resistant colour coordinated aggregates.
- Premier Shield integral and topcoat treatment for satin finish, water and oil repellence, reduction of algae, moss and efflorescence formation
- modules as per the drawing given below



**Escalon 1000mm\*780mm\*100mm module layout**

Stone Type	Stone Size in mm
Type01	600*150*100
Type02	560*150*100
Type03	440*150*100
Type04	400*150*100
Type05	480*120*100
Type06	360*120*100
Type07	320*120*100
Type08	280*120*100
Type09	240*120*100

Sr.	Parameters	Minimum Requirements
1.	Percentage Water Absorption	Average not over 6%
2.	Compressive strength	Average of all pcs not less than 400 Kg/cm <sup>2</sup>
3.	Tensile Splitting Strength (as per EN 1338)	Average not less than 3 MPa
4.	Average wear in Thickness- Abrasion	Conforming to Grade 'H' of EN 1338
5.	Tolerance in size (length + breadth)	± 2mm
6.	Thickness of wearing layer	Not less than 5mm
7.	Tolerance in Thickness of block	± 4mm
8.	Colours	UV Light resistant fast colours from Lanxess or approved only to be used.

- The modular paving planks must be manufactured on Vibropress type machine only. The manufacturer must demonstrate the feeding of material into the machines by automatic batching plants with capacity of min 30 m<sup>3</sup>/hr.
- The manufacturing company must be an ISO 9001:2015 certified Company or should have equivalent quality management systems in place to ensure quality product.
- The modular paving planks must meet the sustainability criteria and should be certified as a green product by CII.
- The modular paving planks will be made using wear resistant materials in the face mix as specified by the architects.
- The colours of the blocks (wearing layer) will be as selected by the architects.
- The modular paving planks must be cured in a controlled environment to ensure efflorescence free material.
- The manufacturer must have in house testing laboratory to carry out all test including Compressive strength testing, water absorption, abrasion resistance etc.